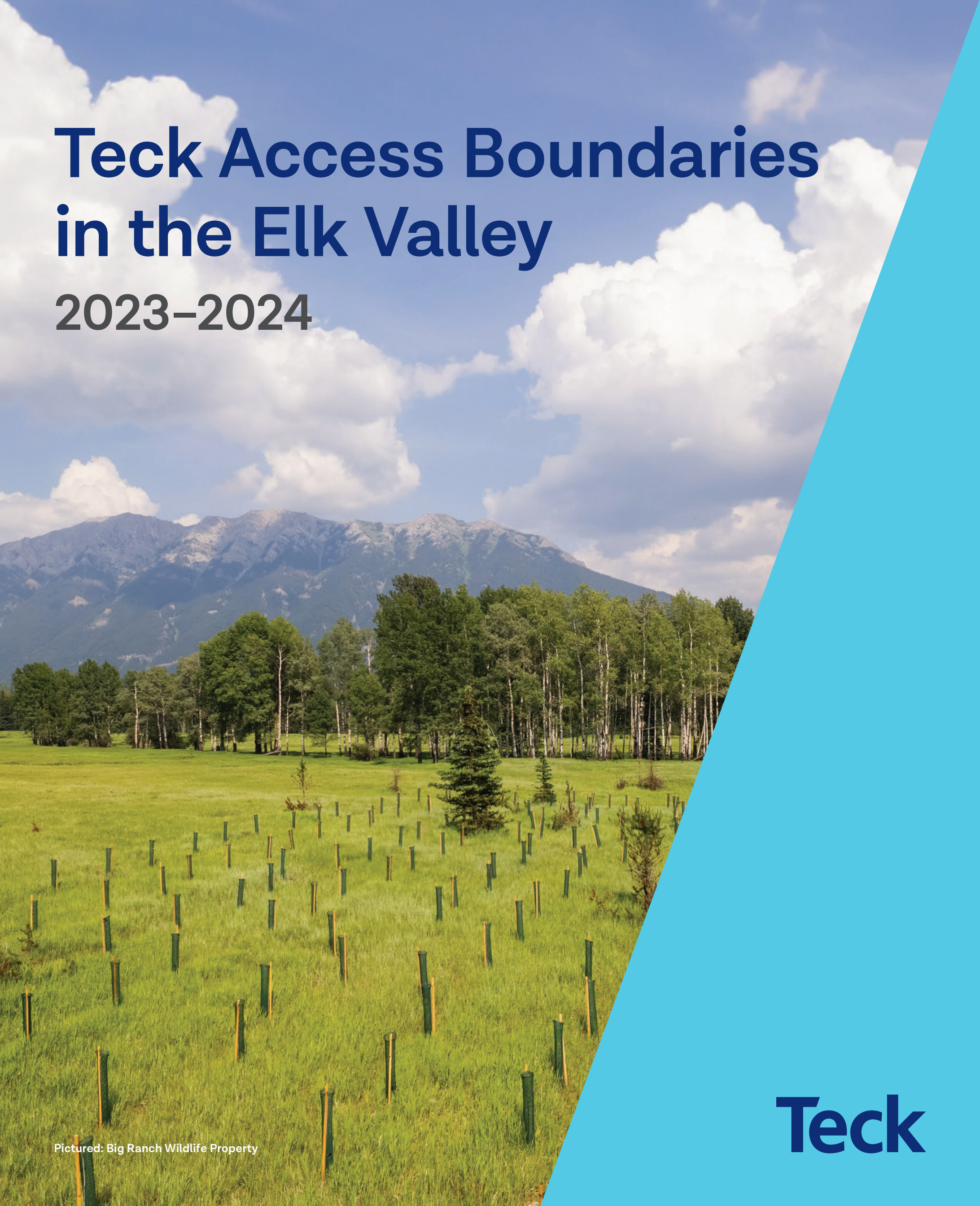


Teck Access Boundaries in the Elk Valley

2023–2024



Pictured: Big Ranch Wildlife Property

Teck

Promoting Safety On- and Off-site with Defined Access Boundaries

For your protection and ours, please observe and follow the No Unauthorized Entry, Bow Hunting Only, No Shooting and No Hunting boundaries. Mining activities can start avalanches or rockslides without warning. Maps should be used for reference only. Please follow field signage at all times.

If you see wounded game crossing the safety boundary, do not follow. Contact the site Loss Prevention for further instructions.

Site Information

Fording River Operations: 250.865.5016 or 250.425.4133

Greenhills Operations: 250.865.3098 or 250.865.3042

Line Creek Operations: 250.425.3112

Elkview Operations: 250.425.8899

Coal Mountain Operations: 250.425.7390

We Want Your Input

As backcountry users and recreationalists, your input on trails and land access located on or through Teck land is valuable. As our mine plans evolve, we want to understand the areas of interest to you and how we can help facilitate continued safe use of these areas, as we adjust our No Unauthorized Entry Boundaries.

Join us for our annual backcountry user and outdoor recreationalist meeting on December 6, 2023.

To view the Teck Access Boundary maps online, visit www.teck.com/access.

If you have any questions or feedback about our operations in the Elk Valley, please contact us;

Phone toll-free to **1.855.806.6854**

Send an email to feedbackteckcoal@teck.com

Fill out an online form at www.teck.com/ElkValley

Supporting Wildlife Habitat and Connectivity in the Elk Valley

In partnership with the Nature Trust of BC and the Sparwood and District Fish and Wildlife Association, Teck is proud to support the Big Ranch Habitat Enhancement Project. This project will aid in reversing the impacts of land-use changes to help return the 325-hectare Big Ranch Wildlife Property to a productive forest-grassland corridor. This project was initially made possible by the Columbia Basin Trust's Ecosystem Enhancement Grant, which focuses on supporting and strengthening the health of ecosystems, including wetlands, fish habitats, forests, and grasslands.

The Big Ranch Wildlife Property is a critical area for wildlife and provides much-needed range to support viable populations in the Elk Valley. The improvements will focus on managing invasive species, and renewing forest, grassland, and wetland ecosystems important to Rocky Mountain elk, and several blue list species (extreme vulnerability) and red list species (endangered or threatened) such as the American badger, Lewis' woodpecker, Williamson's sapsucker, Swainson's hawk, short-eared owl, great blue heron and American bittern.

Big Ranch Enhancements Benefitting the Future of Wildlife

Purchased by the Nature Trust of BC in 1990, the Big Ranch Wildlife Property protects existing wildlife values, provides critical elk winter and spring habitat, and helps to compensate for the loss of winter range riparian habitats. The Sparwood and District Fish and Wildlife Association has been involved in carrying out enhancement projects at this location since the early 90's. They are leading the execution of the Big Ranch Habitat Enhancement Project including the planting of nearly 8,000 locally grown plant species (deciduous, coniferous and shrubs) across four treatment units this year.

"The Big Ranch is a spectacular example of the rich biodiversity found in the Kootenays and safeguarding it has been a priority for the Nature Trust for decades," said Dr. Jasper Lament, CEO, the Nature Trust of BC, adding, "biodiversity loss is one of the key crises of our time and the Big Ranch project demonstrates the power of partners working together to restore and manage such ecologically significant areas."

"Conservation and habitat enhancement is a big part of what our wildlife association does. The Big Ranch is an important property in the Elk Valley, and it is crucial that we continue to partner on land management initiatives to ensure this landscape will meet the needs and support wildlife," said Matt Huryn, Sparwood and District Fish and Wildlife Association.

Visiting the Big Ranch Wildlife Property

The Big Ranch Wildlife Property is for everyone to enjoy. As visitors, please remember that this area is home to elk and other wildlife. Please respect their needs and do not disturb them, particularly during the winter and spring seasons.

Be mindful of the habitat. Control your pets at all times to avoid incidental harassment of wildlife.

Camping or overnight parking is not permitted.

For more information on the Big Ranch Wildlife Property, visit www.naturetrust.bc.ca.

Tips and Tricks for Invasive Species Prevention in Elk Valley

Teck is proud to support the East Kootenay Invasive Species Council's (EKISC) 2023 Elk Valley Invasive Plant Management Project which applies preventative treatment to invasive plants in the Elk Valley, including the Big Ranch Wildlife Property. This non-profit organization builds partnerships and supports collaborative projects in natural and applied science, policy research, outreach and education to protect our forests, fields, gardens, waterways and cities from the damaging effects of invasive species. Learn more about EKISC at www.ekisc.com

The Elk Valley boasts a diverse and fragile ecosystem that is increasingly threatened by the spread of invasive species. These non-native plants, animals, and pathogens have the potential to cause significant harm to the region's native flora, fauna, and habitats.

Prevent Transportation

You can prevent the unintentional transportation of invasive plant seeds, insects and pathogens by brushing off your boots, and keeping your vehicles and recreation equipment clean. Additionally, adhering to designated trails and campsites reduces the chances of introducing invasive species to undisturbed areas.

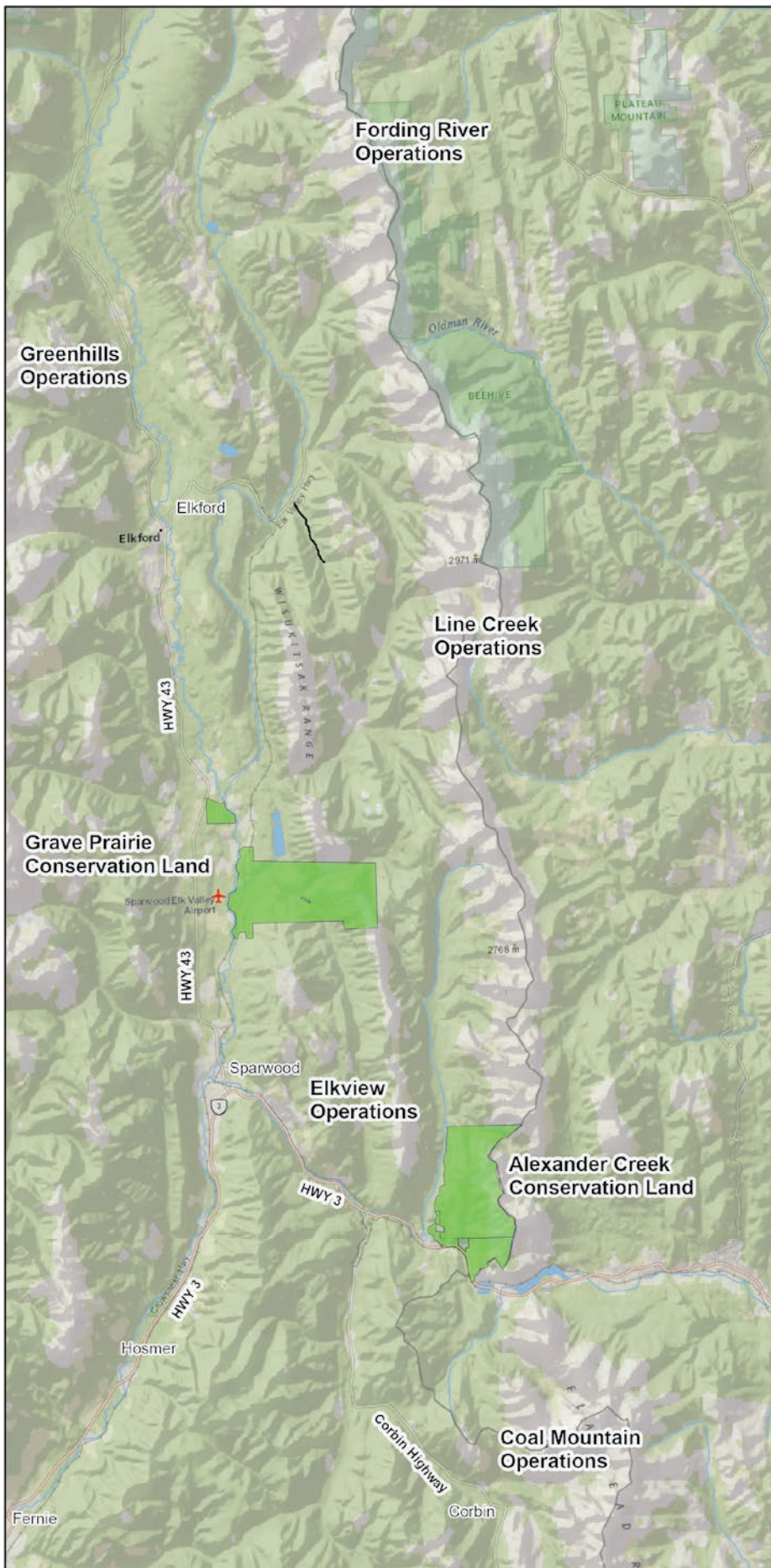
Know the Species

Early detection and rapid response are key mitigations. Familiarize yourself with the signs of invasive species and report any suspected sightings, such as monocultures, fast growth or growing in disturbed areas. Pick up an invasive species guidebook to get familiar with invasives of concern for this area from the East Kootenay Invasive Species Council.

Five Weeds to Watch for in the Valley

While you are in the backcountry, there are five specific weeds to watch for:

- Blueweed
- Spotted Knapweed
- Caraway
- Orange Hawkweed
- Scentless Chamomile

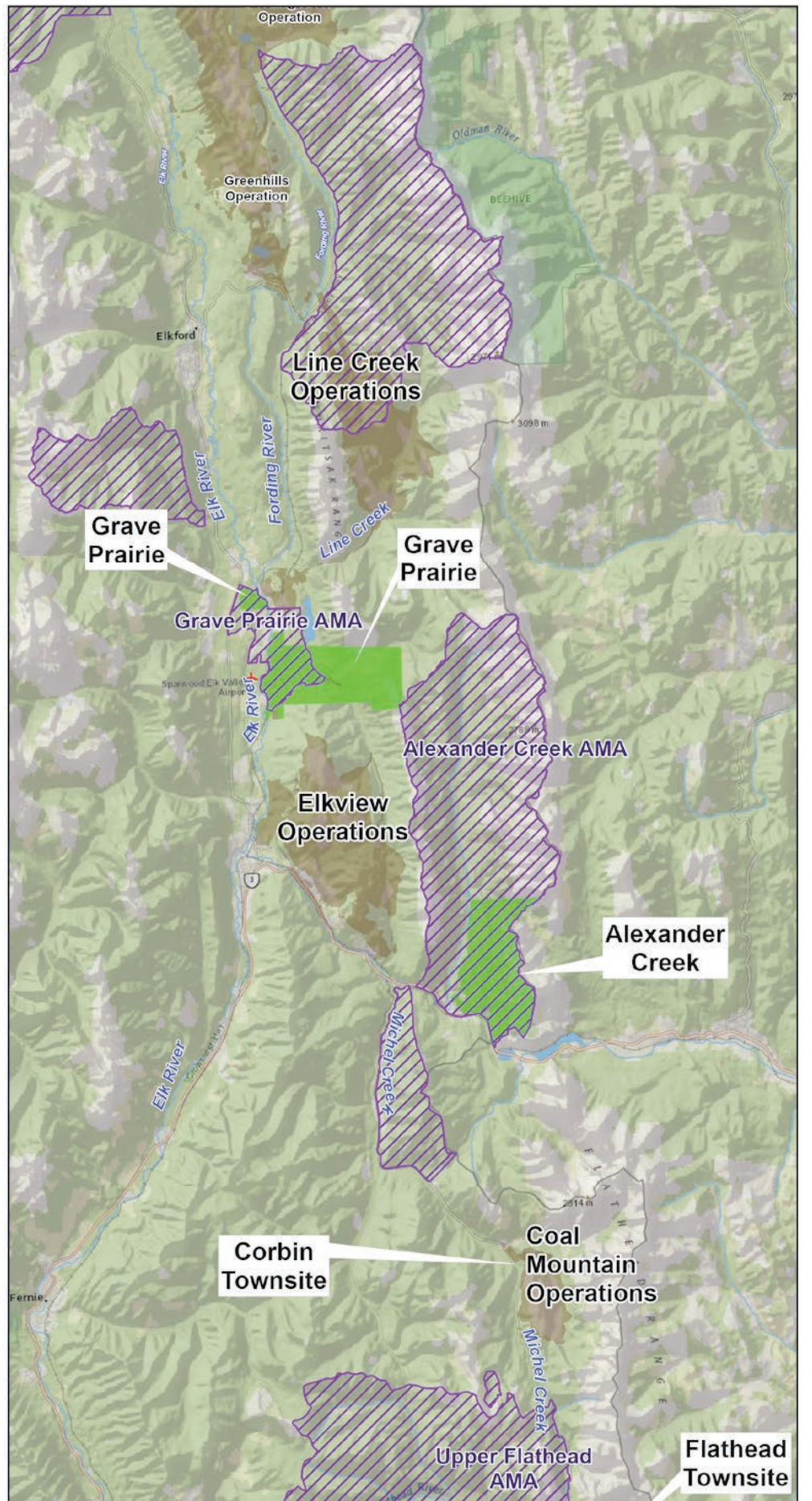


Elk Valley NUE Boundaries and Conservation Lands

The maps and map data are provided 'as is' without any guarantee, representation, condition or warranty of any kind, either express, implied, or statutory. Teck Resources Limited assumes no liability with respect to any reliance the user places in the maps and map data, and the user assumes the entire risk as to the truth, accuracy, currency, or completeness of the information contained in the maps and map data.

| | |
|---|-----------------------|
| ● | Town |
| ○ | Hamlet |
| — | Paved Road |
| — | Controlled Access |
| ■ | Municipal No Shooting |
| ■ | Bow Hunting Only |
| ■ | No Unauthorized Entry |
| ■ | Conservation Land |
| ■ | Lakes |
| — | Stream |

Scale: 1:330,000
Date: Q3/2023



Teck Conservation Lands

The maps and map data are provided 'as is' without any guarantee, representation, condition or warranty of any kind, either express, implied, or statutory. Teck Resources Limited assumes no liability with respect to any reliance the user places in the maps and map data, and the user assumes the entire risk as to the truth, accuracy, currency, or completeness of the information contained in the maps and map data.

| | |
|---|------------------------------|
| — | Road |
| ▨ | Access Management Area (AMA) |
| — | Mine Permit Boundary |
| ■ | Conservation Lands |

Scale: 1:330,000
Date: Q3/2023

Coal Mountain Mine

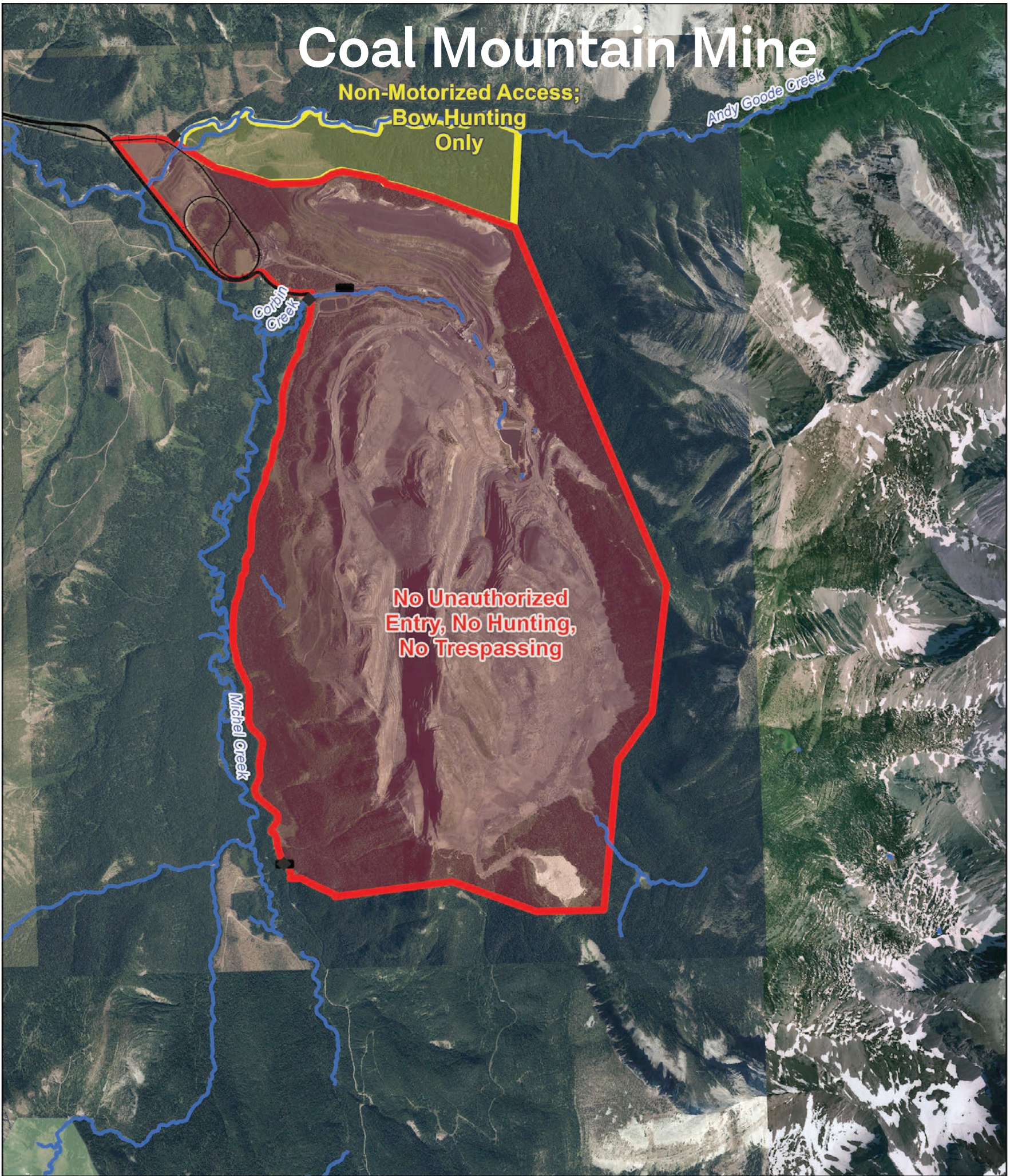
Non-Motorized Access;
Bow Hunting
Only

Andy Goode Creek

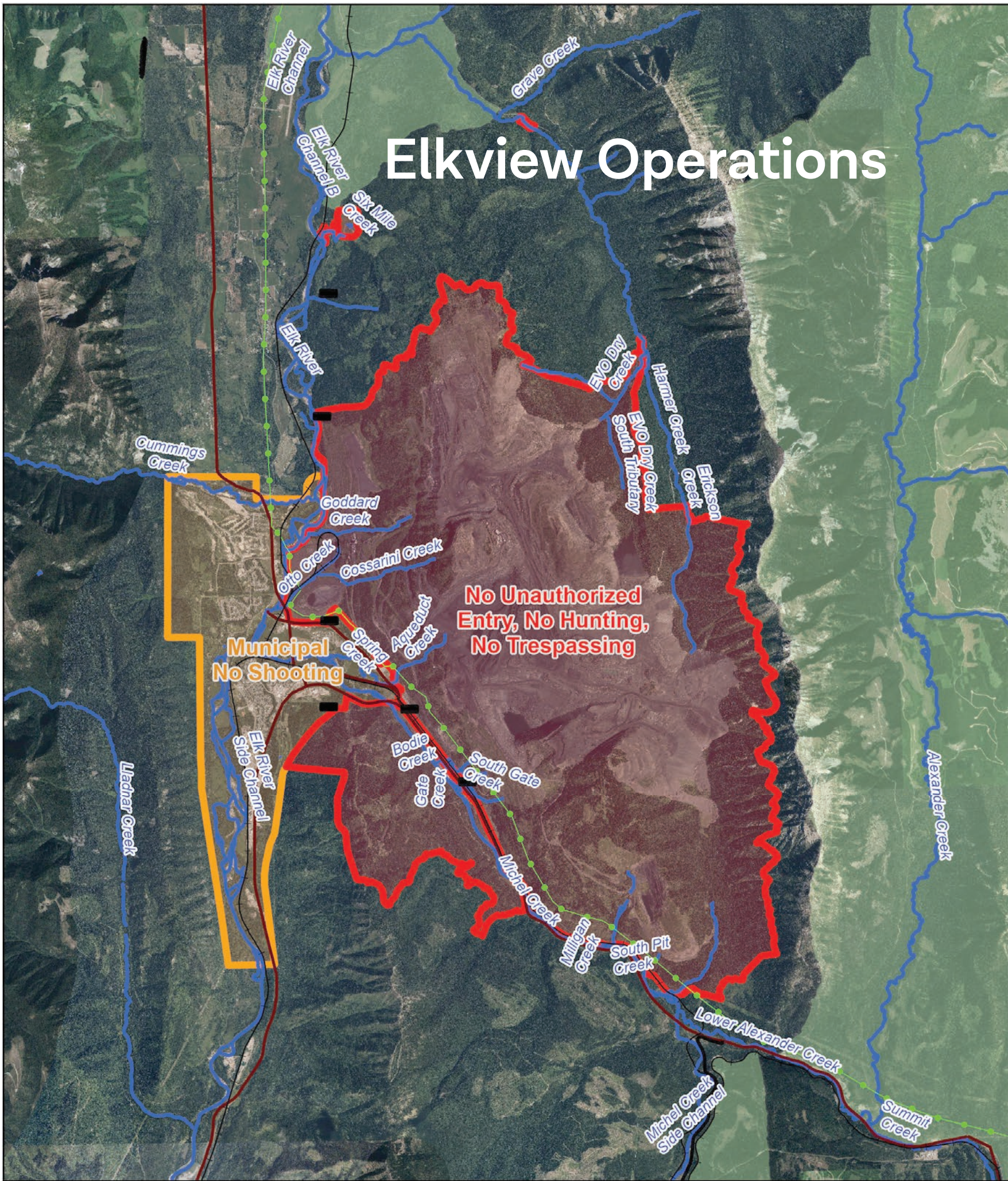
Corbin
Creek

No Unauthorized
Entry, No Hunting,
No Trespassing

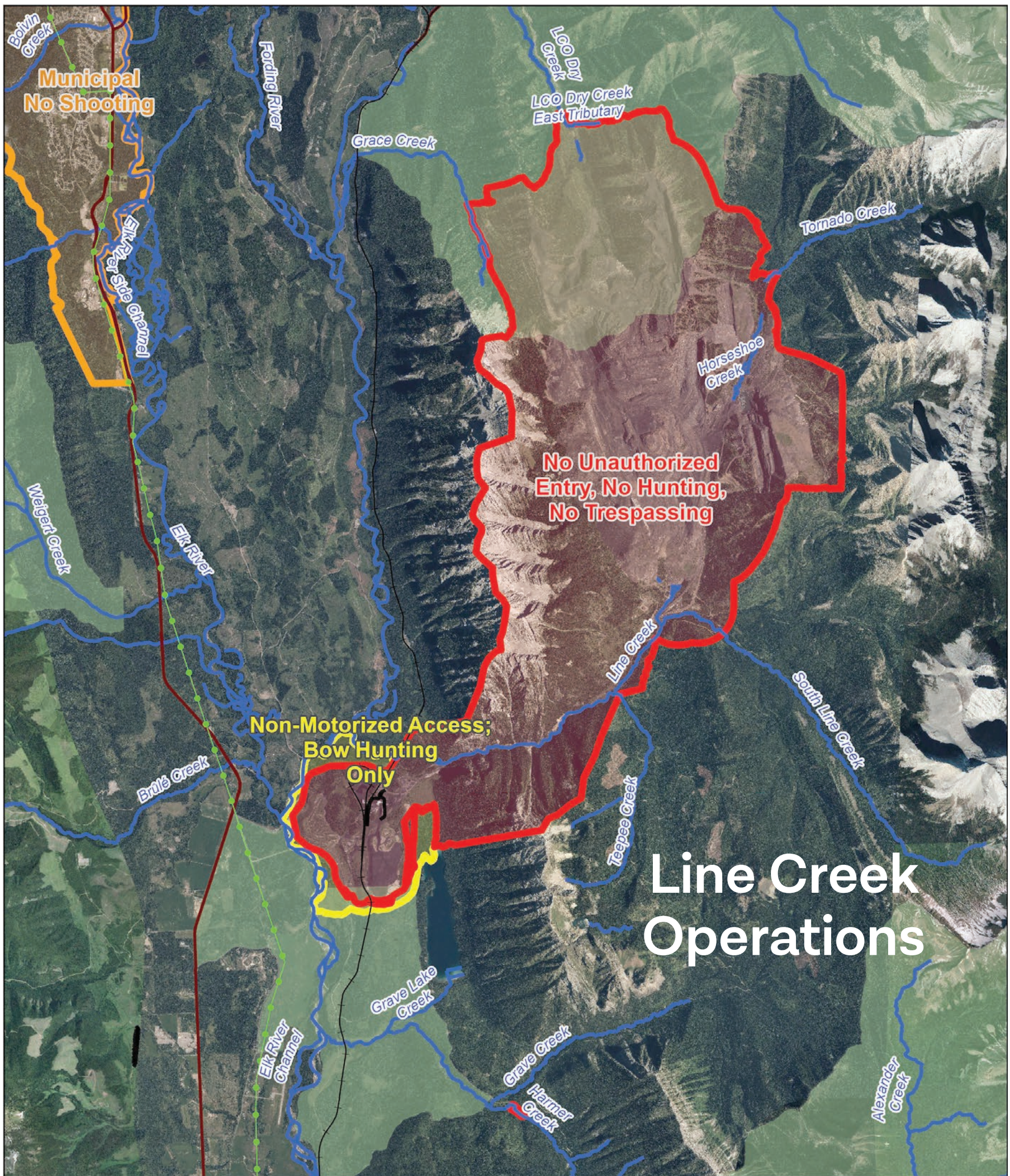
Michel
Creek



| | | | | | |
|--|--|--|---|--|--|
| <p>The maps and map data are provided 'as is' without any guarantee, representation, condition or warranty of any kind, either express, implied, or statutory. Teck Resources Limited assumes no liability with respect to any reliance the user places in the maps and map data, and the user assumes the entire risk as to the truth, accuracy, currency, or completeness of the information contained in the maps and map data.</p> | | <p> Gate Sign Railway Gravel Major Streams </p> | <p>No Unauthorized Entry - Coal Mountain Mine</p> | | |
| | | | <p> No Unauthorized Entry No Shooting, Bow Only Zone Access Management Area (AMA) </p> | <p>DATE: 8/2/2023</p> | |
| | | | <p>Scale: 1:40,000</p> | <p>Spatial Reference NAD 1983 UTM Zone 11N</p> | |

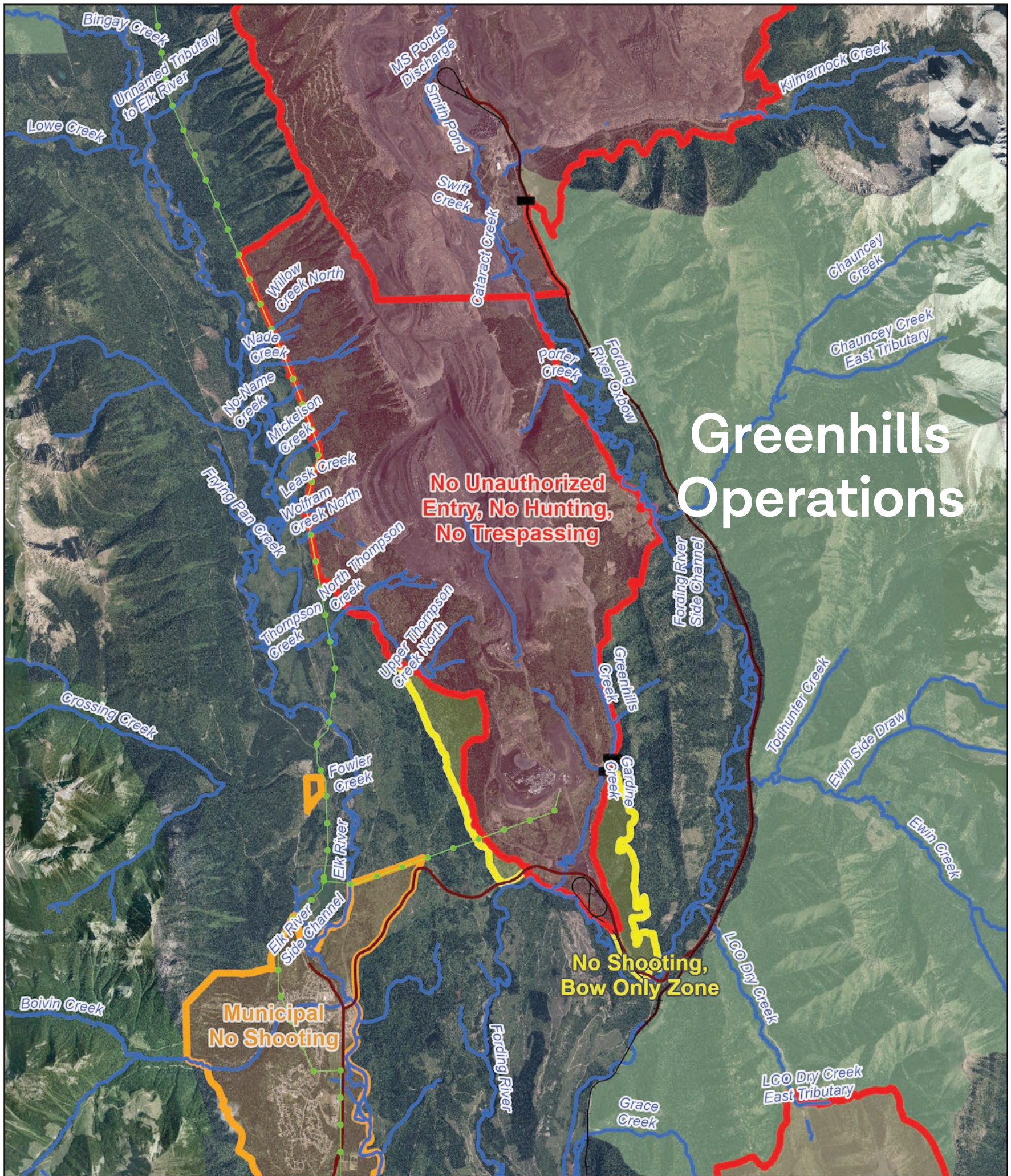


| | | | | |
|--|--|--|---|--|
| <p>The maps and map data are provided 'as is' without any guarantee, representation, condition or warranty of any kind, either express, implied, or statutory. Teck Resources Limited assumes no liability with respect to any reliance the user places in the maps and map data, and the user assumes the entire risk as to the truth, accuracy, currency, or completeness of the information contained in the maps and map data.</p> | | <h3>No Unauthorized Entry - Elkview Operation</h3> | | |
| | | <ul style="list-style-type: none"> Gate Railway Power Lines Paved Surface Gravel | <ul style="list-style-type: none"> Major Streams Municipal No Shooting No Unauthorized Entry Access Management Area (AMA) | |



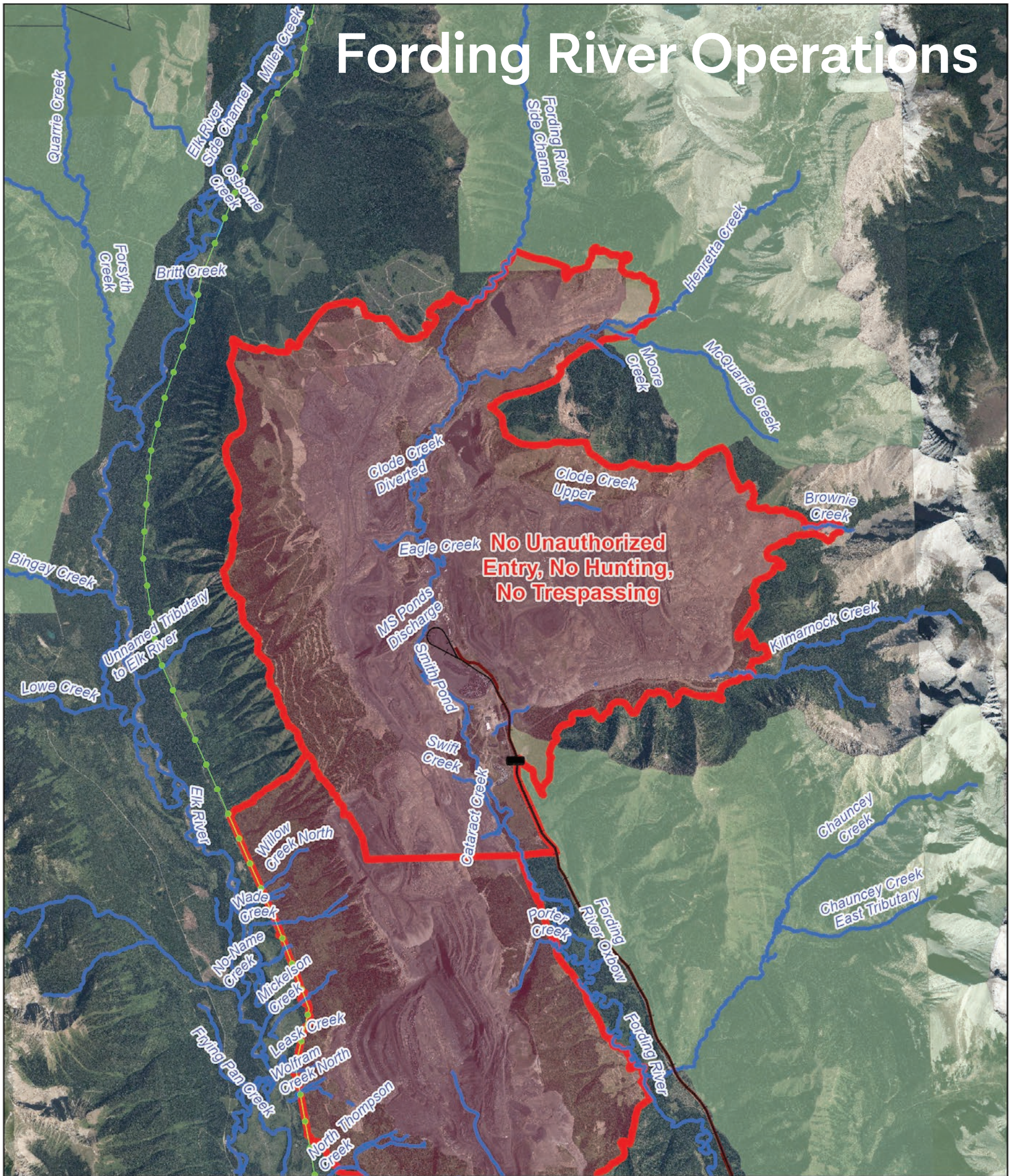
Line Creek Operations

| | | | | |
|--|--|---|---|---|
| <p>The maps and map data are provided 'as is' without any guarantee, representation, condition or warranty of any kind, either express, implied, or statutory. Teck Resources Limited assumes no liability with respect to any reliance the user places in the maps and map data, and the user assumes the entire risk as to the truth, accuracy, currency, or completeness of the information contained in the maps and map data.</p> | | <ul style="list-style-type: none"> Railway Power Lines Paved Surface Gravel Major Streams | <p>No Unauthorized Entry - Line Creek Operation</p> <ul style="list-style-type: none"> Municipal No Shooting No Unauthorized Entry No Shooting, Bow Only Zone Access Management Area (AMA) | <p>0 40 80 160 km</p> |
| | | | <p>DATE: 8/2/2023</p> <p>Scale: 1:100,000</p> | <p>MINE OPERATION Line Creek Operation</p> <p>Spatial Reference NAD 1983 UTM Zone 11N</p> |



| | | | | | |
|--|--|---|--|--|---|
| <p>The maps and map data are provided 'as is' without any guarantee, representation, condition or warranty of any kind, either express, implied, or statutory. Teck Resources Limited assumes no liability with respect to any reliance the user places in the maps and map data, and the user assumes the entire risk as to the truth, accuracy, currency, or completeness of the information contained in the maps and map data.</p> | | <h3>No Unauthorized Entry - Greenhills Operation</h3> | | | |
| | | <ul style="list-style-type: none"> Gate Railway Power Power Lines | <ul style="list-style-type: none"> Paved Surface Major Streams Municipal No Shooting No Unauthorized Entry | | <ul style="list-style-type: none"> No Shooting, Bow Only Zone Access Management |
| | | <p>DATE: 8/2/2023</p> <p>Scale: 1:100,000</p> | <p>MINE OPERATION: Greenhills Operation</p> <p>Spatial Reference: NAD 1983 UTM Zone 11N</p> | | |

Fording River Operations



| | | | | | | |
|--|--|---|---|--|--|-------------------|
| <p>The maps and map data are provided 'as is' without any guarantee, representation, condition or warranty of any kind, either express, implied, or statutory. Teck Resources Limited assumes no liability with respect to any reliance the user places in the maps and map data, and the user assumes the entire risk as to the truth, accuracy, currency, or completeness of the information contained in the maps and map data.</p> | | No Unauthorized Entry - Fording River Operation | | | | |
| | | <ul style="list-style-type: none"> Gate Railway Power Lines Paved Surface | <ul style="list-style-type: none"> Major Streams No Unauthorized Entry Access Management Area (AMA) | | <table border="1"> <tr> <td>DATE: 8/2/2023</td> <td>MINE OPERATION Fording River</td> </tr> <tr> <td>Scale: 1:100,000</td> <td>Spatial Reference NAD 1983 UTM Zone 11N</td> </tr> </table> | DATE: 8/2/2023 |
| DATE: 8/2/2023 | MINE OPERATION Fording River | | | | | |
| Scale: 1:100,000 | Spatial Reference NAD 1983 UTM Zone 11N | | | | | |